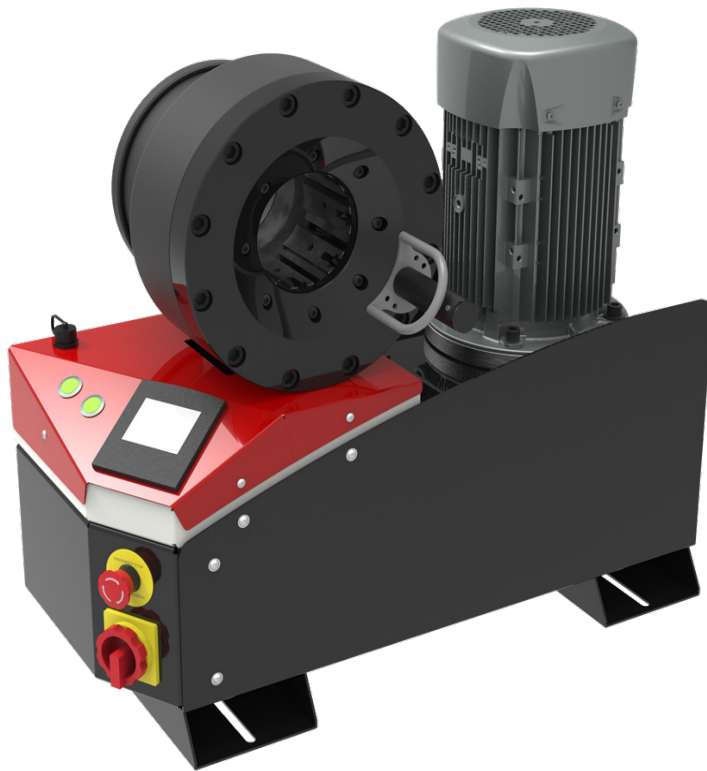


MB 240 EVO

PROFESSIONAL WORKSHOP BENCHTOP

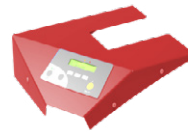


KEY FEATURES

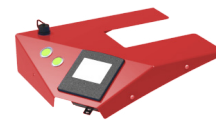
- Crimp force of up to 240 tonnes for hoses up to 2"
- Easy to use and robust
- Radial die movement
- High crimping force
- Extensive range of dies to suit crimping of hydraulic hoses
- Easy set up and maintenance
- Fast and reliable
- Numerical micrometer
- Model shown equipped with SCE control panel
- Calliper option on SCE control panel
- Bluetooth as standard on SC and SCE control panels



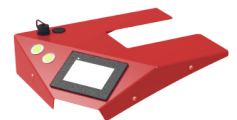
CONTROL OPTIONS AVAILABLE ON REQUEST



SC



SCE



SCS

TECHNICAL SPECIFICATIONS

CRIMP RANGE	NOISE LEVEL
4 - 76 mm (0.157 - 2.992")	<70 dB A
CRIMP FORCE	MOTOR
240 t	4.0 kW
OPENING WITH DIES	VOLTAGES
+38 mm (+1.496")	220/240 V, 3Ph, 50 Hz
COMPLETE OPENING	380/415 V, 3Ph, 50 Hz
118 mm (4.645")	208/240 V, 3Ph, 60 Hz
MASTER DIE LENGTH	380/415 V, 3Ph, 60 Hz
100 mm (3.937")	Other voltages available on request
STANDARD DIES	DIMENSIONS
15, 18, 21, 24, 27, 30, 33, 36, 39, 42, 45, 48, 51, 57, 62, 66, 70	765 x 400 x 650 mm (30 x 16 x 26")
NET WEIGHT	
165 kg (364 lb)	

OPTIONAL



Maintenance Kit



Marking Dies



Die Storage Panel



Die Storage Table



Electrical Footswitch



Quick Change Gun



Aluminium Quick Change Gun



Mechanical Backstop



Die Sets for Brake & Air Conditioning Hoses



Die Storage Panel EVO

MB 240 EVO

PROFESSIONAL WORKSHOP BENCHTOP

HOSE AND FITTINGS SELECTION

HOSE TYPE	FITTING TYPE	MAX HOSE SIZE
2 WIRE BRAID & TEXTILE	MF2000 MULTIFIT; MF3000 OPF; MF3000 OPK	2"
3 WIRE (1 BRAID + 2 SPIRAL)	MF2000 MULTIFIT; MF2000 INTERLOCK PLUS; MF2000 SPIRALFIT	1 ¼"
4 WIRE SPIRALS	MF2000 MULTIFIT; MF3000 OPK	2"
4 WIRE SPIRALS	MF2000 INTERLOCK PLUS; MF2000 SPIRALFIT	1 ¼"
6 WIRE SPIRAL	MF2000 INTERLOCK PLUS;	1"